



PCM

£2,400 PCM

Usk Street

London, E2 0RU

Split level 3 bedroom apartment located on the corner of Usk Street and Roman Road.

The property features a bright reception room with wood flooring and a private south facing balcony, there is a upgraded modern separate kitchen, new carpet leading to 1st floor which has 3 bedrooms and a brand new contemporary fitted bathroom with bath and shower.

Located just a short walk from both Bethnal Green and Mile End Underground Stations with Victoria Park Village close by.

The property is available start of June
ully furnished.

5 weeks deposit: £2769

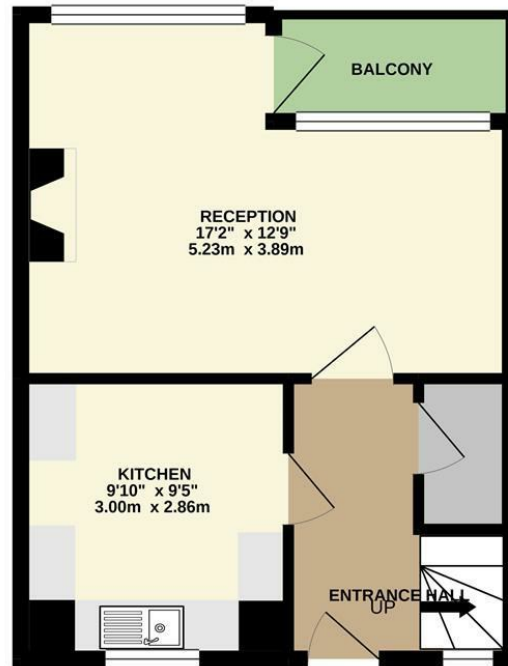
12 month contract: break clause subject to offer

Council tax : Band C

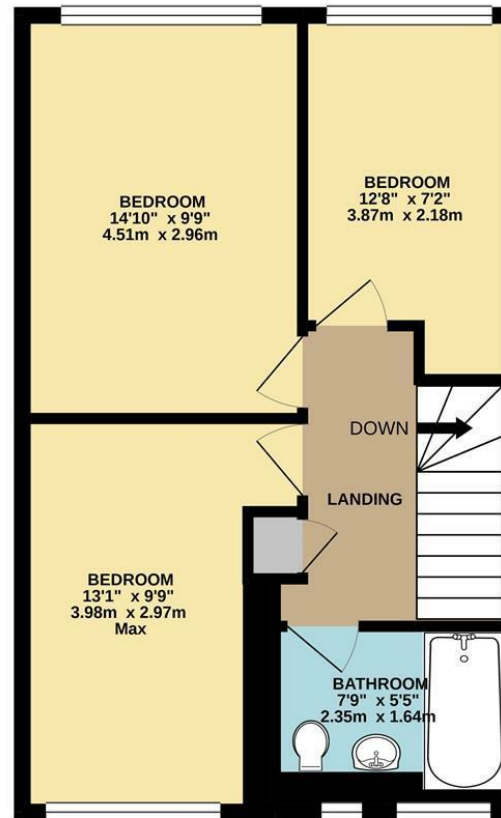




GROUND FLOOR
344 sq.ft. (32.0 sq.m.) approx.



1ST FLOOR
464 sq.ft. (43.2 sq.m.) approx.



TOTAL FLOOR AREA : 809 sq.ft. (75.1 sq.m.) approx.

Whilst every attempt has been made to ensure the accuracy of the floorplan contained here, measurements of doors, windows, rooms and any other items are approximate and no responsibility is taken for any error, omission or mis-statement. This plan is for illustrative purposes only and should be used as such by any prospective purchaser. The services, systems and appliances shown have not been tested and no guarantee as to their operability or efficiency can be given.
Made with Metropix ©2020

Energy Efficiency Rating		
	Current	Potential
Very energy efficient - lower running costs		
(92 plus) A		
(81-91) B		
(69-80) C		
(55-68) D	56	68
(39-54) E		
(21-38) F		
(1-20) G		
Not energy efficient - higher running costs		
England & Wales	EU Directive 2002/91/EC	

Agents Note: Whilst every care has been taken to prepare these particulars, they are for guidance purposes only. All measurements are approximate and are for general guidance purposes only and whilst every care has been taken to ensure their accuracy, they should not be relied upon and potential buyers/tenants are advised to recheck the measurements

OFFICE ADDRESS
88 Cheshire Street
London
E2 6EH

OFFICE DETAILS
0207 739 6969
info@peachproperties.com
www.peachproperties.com